

## RBHO - SERIES A

### Horizontal Standard Fan Coil, Concealed Ceiling

Quick Reference Product Catalog

#### MODEL

- RBHO - SERIES A - Horizontal standard fan coil unit, concealed ceiling

#### FEATURES

- Galvanized steel construction
- 1 1/2" duct discharge collar
- Four point hanger mounting brackets
- 3/8" elastomeric closed cell foam insulation
- Solid ceiling access panels (Optional)

#### COILS

- Cooling - chilled water (2-6-row)
- Heating - hot water (1 or 2-row), reheat or preheat position
- 6 total rows of cooling and heating coils maximum
- 3/8" O.D. seamless copper tubes (0.012" tube wall thickness)
- 1/2" O.D. seamless copper tubes (0.016" or 0.025 tube wall thickness)
- Stainless steel coil casing (optional)
- High efficiency aluminum fin surface available in 10, 12, 14 FPI
- Left or right hand, same or opposite side connections
- Manual air vents
- Automatic air vents (Optional)

#### DRAIN PANS

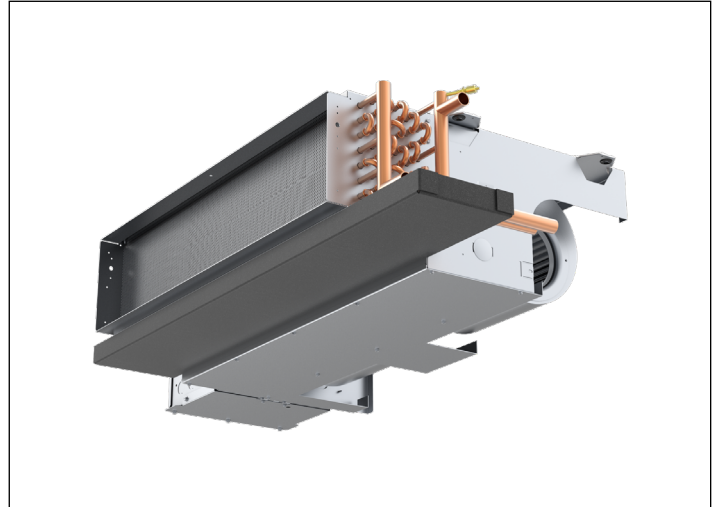
- Single wall, galvanized steel or stainless steel, externally insulated – fire retardant and antimicrobial
- Positively sloped to drain connection
- Condensate pump - single point power, plenum rated, maintenance free and quiet operation 115V, 230V (optional)
- Condensate overflow switch (optional)
- Auxiliary drain pan, galvanized or stainless steel (optional)
- 7/8" O.D. primary drain connection (3/4" MPT for stainless steel pan)
- 5/8" O.D. secondary drain connection (3/8" MPT for stainless steel pan)

#### FAN/MOTOR ASSEMBLIES

- Forwardly curved, DWDI centrifugal type
- 115 & 277V, 1-phase, 3-speed PSC motors
- Quick disconnect motor connections
- Removable fan/motor deck for service

#### THERMOSTATS

- Remote mounted analog, digital display or programmable, Bacnet or Standalone
- 2 and 4 pipe control sequences
- Automatic and manual changeover
- 24V floating point control
- 0-10V proportional control



#### ELECTRICAL

- Electrical junction box for field wiring terminations
- Freezestat, dirty filter switch, discharge air temperature sensor (optional)
- Unit and remote mounted 3-speed fan switches (optional)
- Bottom hinged electrical enclosure (optional)
- SCR fan speed controller high speed only (optional)
- Main fusing (optional)
- Disconnect switch, toggle or door interlocking (optional)
- Electric reheat available
- Silent electric heat relays and fan relay (optional)

#### PIPING PACKAGES

- Factory assembled, shipped loose for field installation
- 1/2" and 3/4" piping size
- 2 and 3-way, 2-position or floating point modulating, 0-10V proportional control valves
- Isolation ball valves with memory stop
- Automatic fixed flow control (optional)
- Unions and P/T ports (optional)
- Y strainer with blowdown

#### CERTIFICATIONS

- cETL Listed Electric Heat Units - Adherence to UL 60335
- AHRI 440 certified performance data

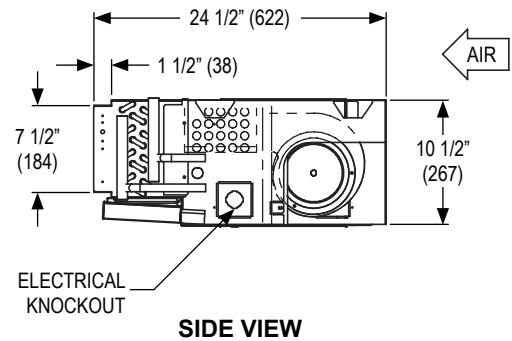
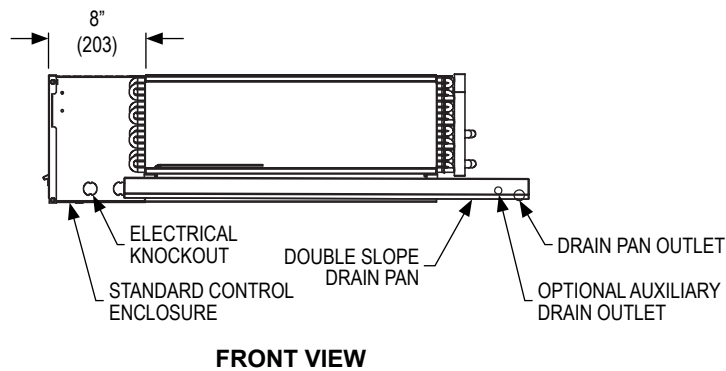
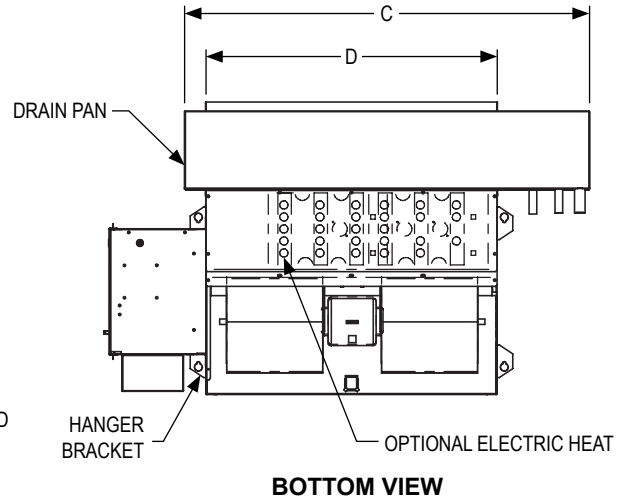
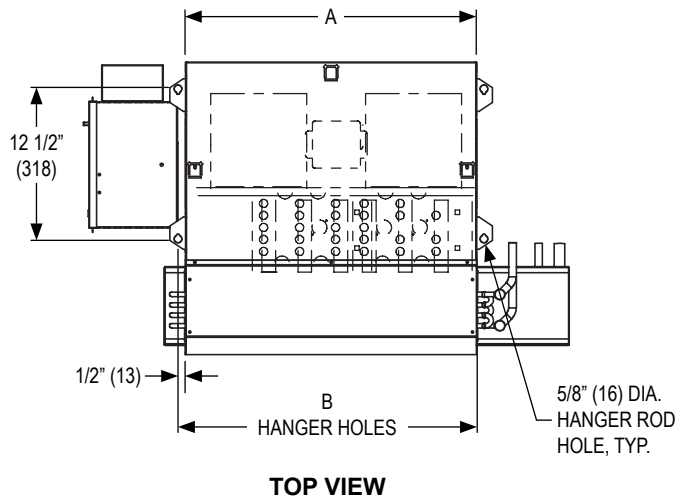
WEB SEARCH: **RBHO**

# RBHO - SERIES A

## Horizontal Standard Fan Coil, Concealed Ceiling

Quick Reference Product Catalog

### DIMENSIONAL DATA



NOTES: Left hand coil shown, right hand is available. Provide access clearance for electrical enclosure per local and national electrical code requirements. Dimensions in parentheses are in millimeters (mm). See table below for dimensional references.

# RBHO - SERIES A

## Horizontal Standard Fan Coil, Concealed Ceiling

### Quick Reference Product Catalog

## PERFORMANCE AND DIMENSIONAL DATA

Size	Performance			Dimensions			
Unit	CFM Range	Total Cooling Capacity Range (MBH)	Heating Capacity Range (MBH)	A	B	C	D
02	257 - 327	5 - 7	10 - 21	16" (406)	17 1/4" (438)	25 1/4" (641)	16" (406)
03	302 - 361	6 - 9	13 - 24	19 1/4" (489)	20 1/2" (521)	28 1/2" (724)	19 1/4" (489)
04	428 - 528	7 - 13	16 - 34	24 1/4" (616)	25 1/2" (648)	33 1/2" (851)	24 1/4" (616)
06	529 - 667	10 - 17	22 - 42	31" (787)	32 1/4" (819)	40 1/4" (1022)	31" (787)
08	713 - 749	10 - 22	29 - 52	38" (965)	39 1/4" (997)	47 1/4" (1200)	38" (965)
09	704 - 772	10 - 17	28 - 52	42 1/4" (1073)	43 1/2" (1105)	51 1/2" (1308)	42 1/4" (1073)
10	908 - 1195	16 - 28	38 - 74	52" (1321)	53 1/4" (1353)	61 1/4" (1556)	52" (1321)
12	1221 - 1457	22 - 35	48 - 85	60" (1524)	61 1/4" (1556)	69 1/4" (1759)	60" (1524)

NOTES: Information shown is abbreviated. See website for complete information. Data is based on 115/1/60 3-speed PSC motor on high fan speed with 0.05" ESP. Cooling coil: 75°F DB and 63°F WB EAT, 45°F EWT, 55°F LWT. Heating coil: 70°F DB EAT, 180°F EWT, 160°F LWT. CFM and coil performance ranges will vary depending on coil combination selected.